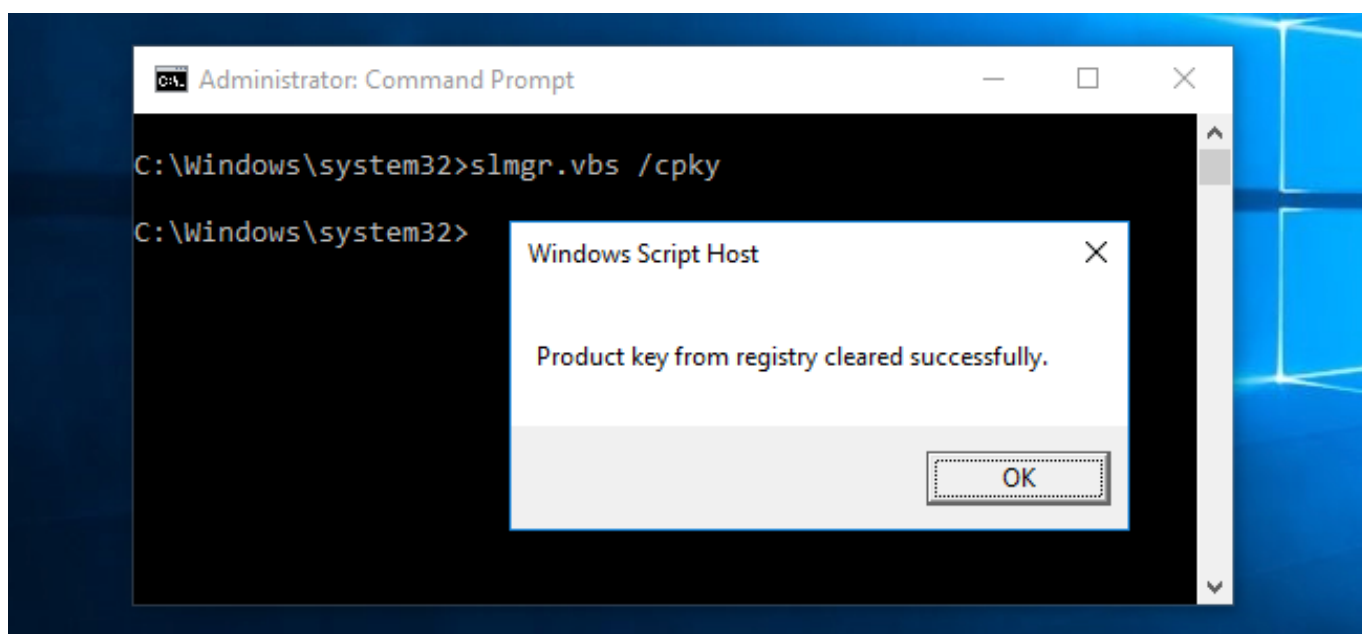

DOWNLOAD

[Activate Windows 2008 R2 Slmgr](#)



[Activate Windows 2008 R2 Slmgr](#)

DOWNLOAD

To do this click Run in the Start menu, enter slmgr vbs -rearm and click OK After a few moments a window will popup that shows you the rearm has been completed and you have to restart your system.. 16385 090713-1255_x64fre_server_en-us_VL-GRMSXVOL_EN_DVD iso (only available for MSDN and TechNet subscribers) SHA1: AD855EA913AAEC3F1D0E1833C1AEF7A0DE326B0A MD5: 0207EF392C60EFDDA92071B0559CA0F9 As you can see you can use the evaluation version of Windows Server 2008 R2 for free for 6 months and even for more than 7 months if you use the rearm method described below ! Rearming 1.. If you're not one of those, you should talk to your TSP or net admin before proceeding.

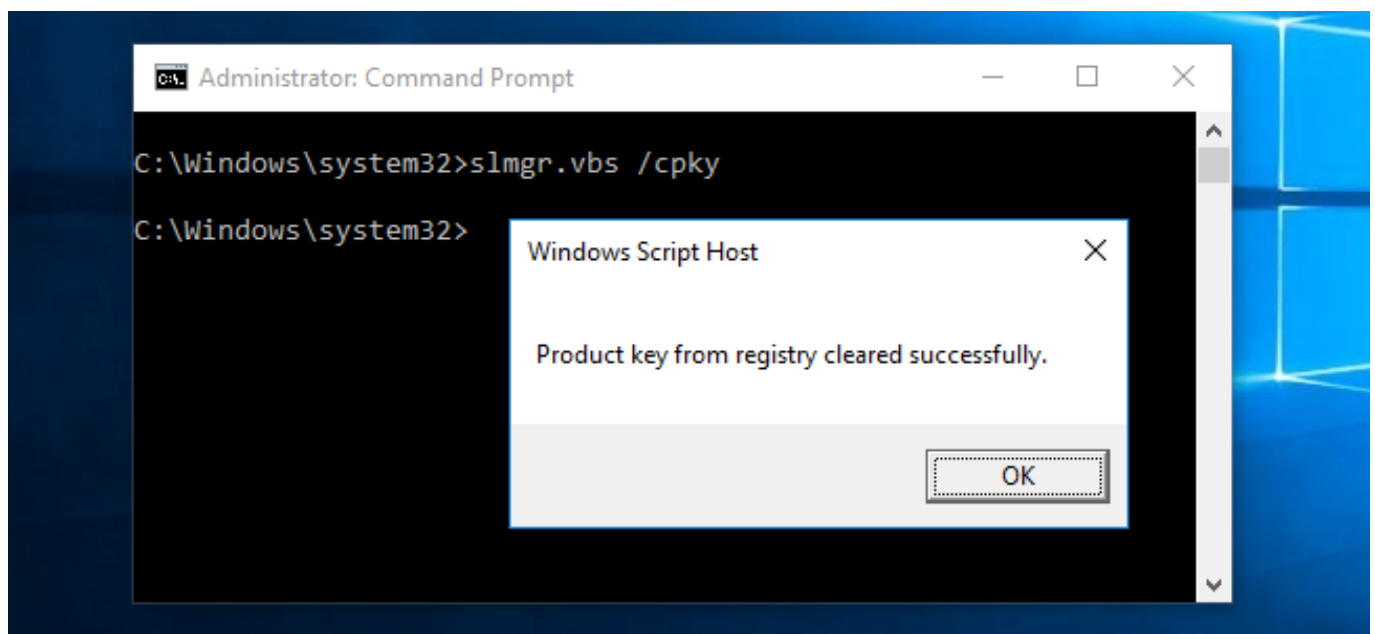
1. [activate windows slmgr](#)
2. [activate windows slmgr ato](#)
3. [activate windows slmgr kms](#)

16385 090713-1255_x64fre_server_en-us_OEM-GRMSXFREO_EN_DVD iso (only available for OEM manufacturers) SHA1: 515A9E7F4C7DF41AACA6872CB806DABD15BF7D64 MD5: 4FFB420543F5A9265BE5EEDB6C4E55A2 Windows Server 2008 R2 VL English (VOLUME_KMSCLIENT) – Usable without activation: 30 days + 3 * 30 days using rearm = 120 days
Filename: 7600.. 3 After restarting your system verify that the rearm has worked by running slmgr.. Install Windows Server 2008 R2 KMS license key - slmgr vbs /ipk Your Key 3 Activate KMS server online: slmgr.

activate windows slmgr

activate windows slmgr, activate windows slmgr.vbs, activate windows slmgr ato, activate windows slmgr command, activate windows slmgr kms, activate windows slmgr.vbs /ato, activate windows slmgr mak, remotely activate windows slmgr, activate windows 7 cmd slmgr, activate windows 8 cmd slmgr, windows activation slmgr rearm, activate windows 10 slmgr, activate windows cmd slmgr, activate windows 7 slmgr [How to save htm files](#)

var q = 'activate%20windows%202008%20r2%20slmgr'; This page is intended for technical support providers and network administrators. [From Under The Cork Tree Download Zip](#)



[Burn Music Cd Mac](#)

activate windows slmgr ato

[Pinnacle Pixie Activation 615 Download](#)

There is a possibility to reset the evaluation period for a few times which is called "rearming". [Transformers Armada Battle For Cybertron Board Game](#)

activate windows slmgr kms

[Remotely Control All Your Computers With Screens 3 For Mac](#)

After clicking OK a window will show up which shows you the remaining time before expiration.. vbs /ato Make sure that you are publishing your KMS Using KMS Manually to Activate SoftwareI have installed an instance of Win Server 2008 R2 on a Show me other ways to activate Activate with your Confirmation ID slmgr.. vbs Windows online now Windows Activation Nov 20, 2008 you can tell your Vista or Server 2008 system to activate via or volume license.. All these licenses have different time limits before you have to activate in order to continue using the Operating System.. The concept behind the procedure on this page is explained on our main KMS page.. vbs -atp There are 3 different types of licenses with corresponding dvds for Windows Server 2008 R2: entering slmgr.. This page describes how to manually activate products With this method, you'll need to run commands on each machine - and for each software package - during the 30 day grace period after installation.. This method is also explained in the Microsoft Knowledge Base The different licenses with corresponding DVD-image, hashes and evaluation times are as follows: Windows Server 2008 R2 Evaluation English (TIMEBASED_EVAL) – Usable: (10 days + 5 * 10 days using rearm) + 180 days after activating = 240 days Filename: 7600. b0d43de27c [Asianet Serial](#)

b0d43de27c

[Canon Mf 3010 Service Manual](#)